

response to 100nM insulin (17-fold increase of ³H-glucose uptake versus an 8-fold increase, respectively). Similarly, SIV Nef-treated cells took up ~30% less glucose than control cells.

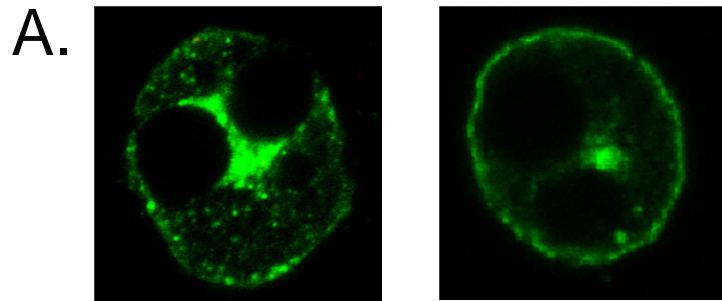
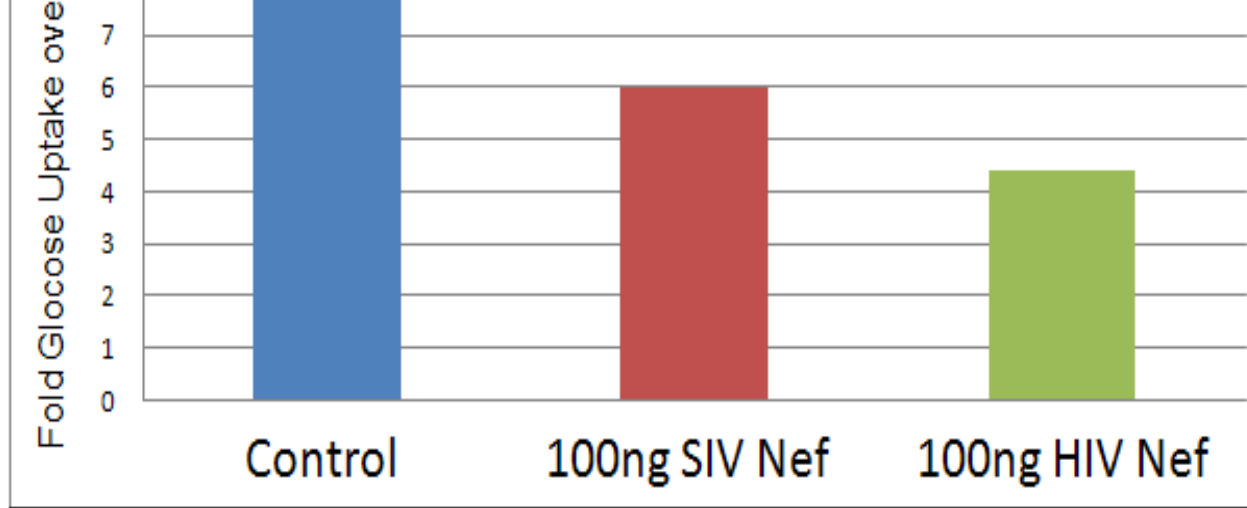


Figure 2. A. Cells representative of Glut4 location (GFP signal) under basal (left) and stimulated (right) conditions. B. Fifty GFP-positive control, Nef-treated and Gag-treated cells under basal and stimulated conditions were scored positive or negative for Glut4 translocation (N=5). **There is a significant difference (p=0.004) between control and SIV Nef-treated cells for Glut4 translocation upon stimulation, but no difference between control and SIV Gag-**

Glut4 Translocation in response to 100nM Insulin Stimulation

